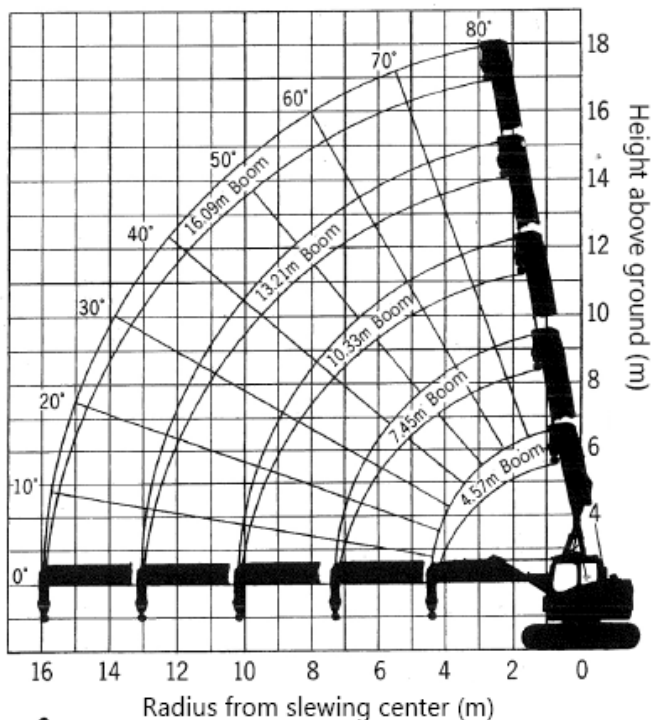


LC1385M-2 working Range



Notes

- 1 The working radii are the actual values allowing for boom deflection. Therefore you must always operate the crane on the basis of the working radius
- 2 Working range diagram is in the state of no load, the deflection of the boom is not included.
- 3 The lifting capacity chart indicates the value not exceeding 78% of the tipping load which can be lifted by this crane provided it is level and standing on firm level ground.

- 4 Pick and Carry operation is very unstable and involves danger, it is prohibited in principle. However, if traveling while suspended unavoidably, please work with the Pick and Carry rated lifting capacity chart.
- 5 Rated capacity of the Pick and Carry operation is the lifted load that can be run on a firm level ground after lifting it in a stationary state. Please do not perform sudden tracking, sudden braking, spin turning (slewing), etc. as for the Pick and Carry operation the load height should be as low as possible so that the load does not swing.

LC1385M-2 Rated Lifting Capacity

Boom length Working radius (m)	(1) 4.57m Boom		(2) 7.45m Boom		(3) 10.33m Boom		(4) 13.21m Boom		(5) 16.09m Boom	
	Stationary on rubber (kg)	Pick & carry (kg)	Stationary on rubber (kg)	Pick & carry (kg)	Stationary on rubber (kg)	Pick & carry (kg)	Stationary on rubber (kg)	Pick & carry (kg)	Stationary on rubber (kg)	Pick & carry (kg)
2.00	4900	2000	4900	2000	3000	1500				
2.50	4900	2000	4900	2000	3000	1500				
2.80	4900	2000	4900	2000	3000	1500	3000			
3.00	4900	2000	4900	2000	3000	1500	3000			
3.10	4900	2000	4900	2000	3000	1500	3000		2600	
3.50	4280	2000	4300	2000	3000	1500	3000		2600	
4.00	3700	1830	3690	1780	3000	1500	3000		2600	
4.20	3500	1750	3480	1700	3000	1500	3000		2600	
4.41	3330	1660	3270	1620	3000	1500	3000		2600	
4.50			3190	1590	3000	1500	3000		2600	
4.60			3100	1550	3000	1500	2910		2600	
5.00			2780	1410	2680	1340	2400		2600	
5.30			2560	1310	2480	1240	2400		2410	
5.50			2430	1250	2360	1180	2290		2300	
6.00			2130	1100	2090	1040	2030	Usage prohibited	2050	
6.50			1870	960	1860	930	1820		1850	
7.00			1650	830	1670	830	1640		1670	
7.29			1530	760	1570	790	1550		1580	Usage prohibited
7.50					1500	750	1490		1520	
8.00					1360	680	1360		1390	
8.50					1230	620	1250		1280	
9.00					1120	560	1150		1170	
10.00					930	460	980		1000	
10.17					900	450	950		980	
11.00							840		860	
12.00							730		750	
12.80							650		670	
13.00							640		650	
13.05							630		650	
14.00									570	
15.00									500	
15.70									450	
15.93									440	
Boom angle range	0~63.7		0~74.3		0~78.8		0~76.8		0~78.6	

- 6 (4) - (5) Movement with boom extension can not be carried out.
- 7 If the length of the boom exceeds the prescribed length, please work with the rated lifting capacity of the boom length one step higher.

- 8 The rated lifting capacity chart include the weight of the hook, please subtract the mass (90 kg) of the hook from the actual lifting load.

- 9 Load restriction by parts of line
 - 1 part 1220 Kg Max
 - 2 parts 2450 Kg Max
 - 4 parts 4900 Kg Max